

Quick and unofficial MorphOS & Mac OS X dual boot guide for Apple Mac Mini PowerPC.

1. Prerequisites

You need a PowerPC Mac Mini, any model will do.

Make sure that you have the OSX Install DVD ready. I used 10.4, but it should be almost the same for all other versions. With Leopard you might not be able to create really small partitions, but on the other hand you could try resizing your current OSX partition to make some space for MorphOS. This guide will cover a 10.4 installation on a clean drive.

Download the MorphOS 2.4 + install ISO image and burn it on a CD or DVD.

Hint: burn the ISO as the CD's image, not as a file on the CD ;)

In case you have an existing OSX 10.3 or 10.4 installation and no access to retail Leopard DVD, you will need a Linux live CD to resize the existing OSX partition without losing your data. Mind that the Disk Utility in Tiger will **format** all partitions if you make any changes to the partition layout. In this guide I used the Ubuntu 9.04 live CD found at <http://cdimage.ubuntu.com/ports/releases/jaunty/release/>. If in doubt, please back up your disk using the Disk Utility's Restore mode. Making a mirror copy of your hard drive would make it possible for OSX's Installer to automatically restore all your applications and settings.

2. Installing OSX from scratch

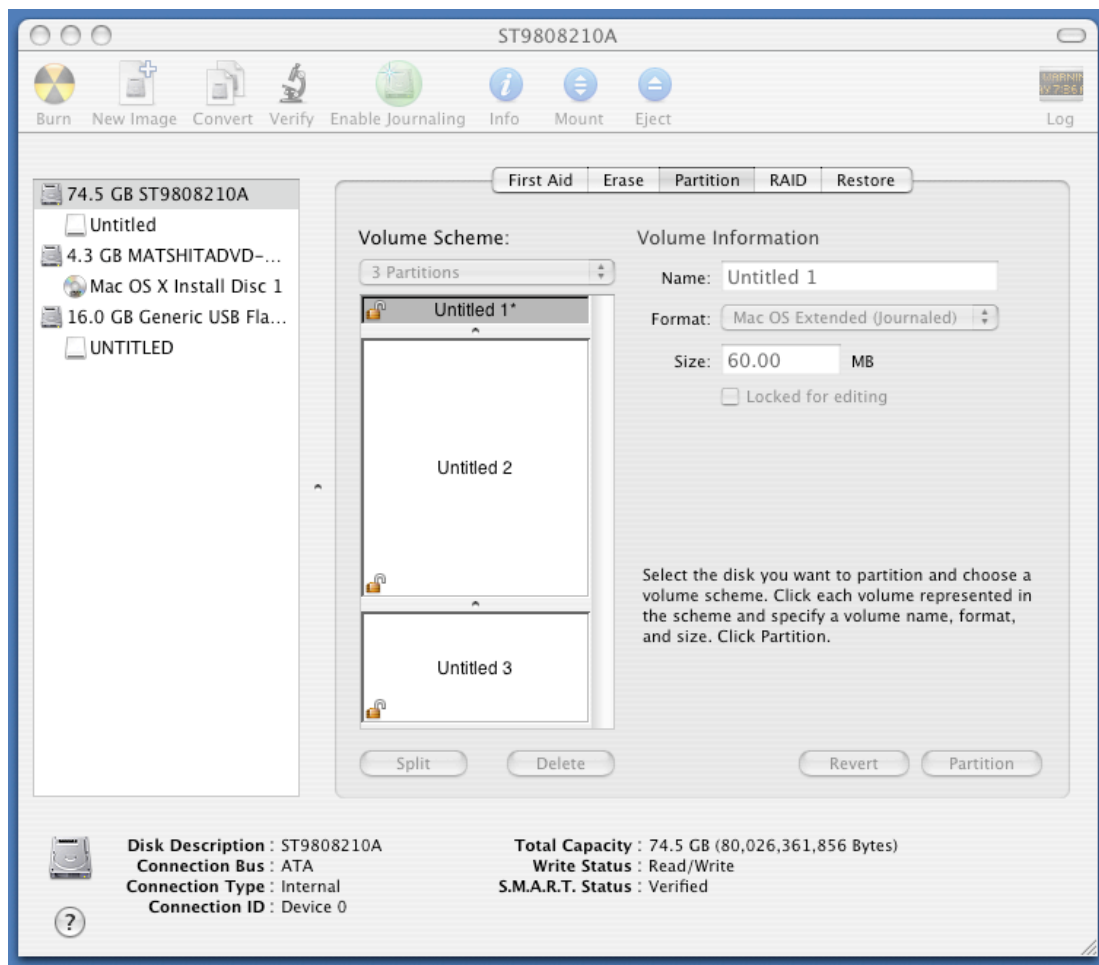
In case you have an existing OSX installation and do not wish to reinstall, see section 4.

Power the Mini on and insert the OSX Install DVD. Press and hold the c key to force a CD boot. Run the Disk Utility from the menu once the installer loads. Pick the internal drive.

Now select the Volume Scheme cycle gadget and select 3 Partitions. Pick the first one and make it 60 MB. The reason for this is that MorphOS actually needs two partitions: one for the boot files and one for the actual installation.

Hint: to make a partition smaller than 1GB, type 0.1 in Size. This will make the partitioner switch to MB instead of GB.

At this point it doesn't matter what file system is selected for the partition, so just ignore whatever Disk Utility preselected for you.



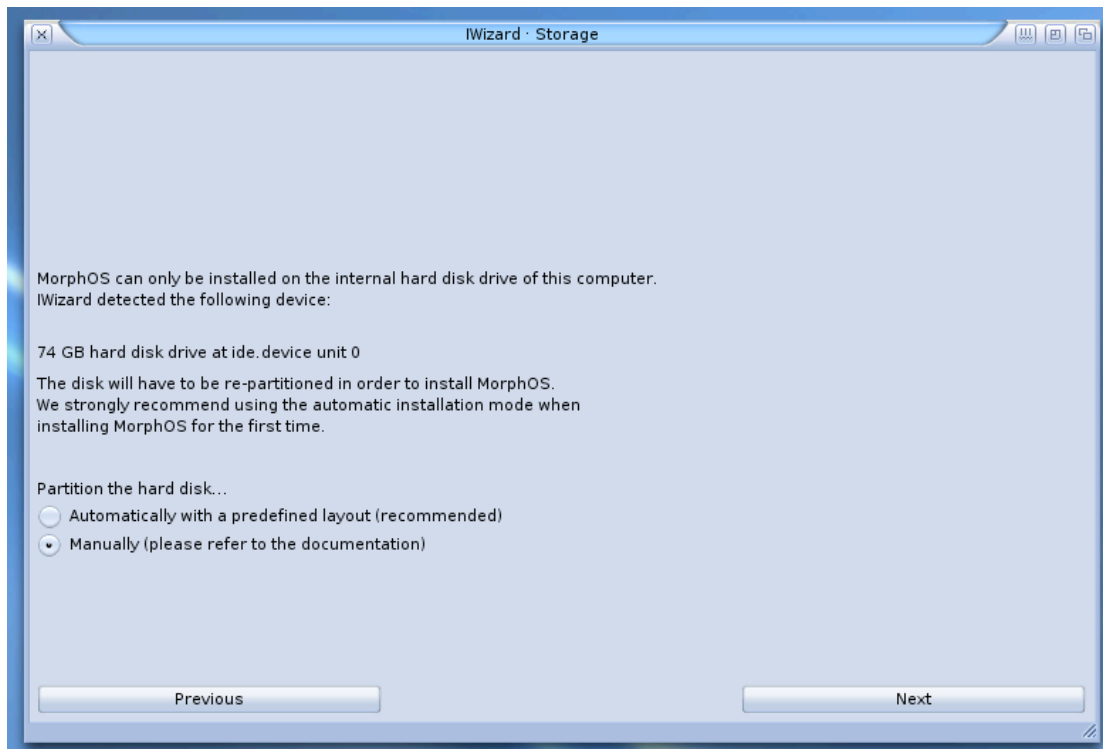
The 3rd partition will be the OSX partition. Give it the size you want, call it OSX and make sure it is using Mac OS Extended (Journaled) in Format. Now click on the ,Partition‘ button and proceed. Quit Disk Utility and proceed with OSX installation as you normally would.

Hint: do click on the ,Customize‘ button before starting the actual installation. You probably don’t want most of the stuff that’s installed by default.

3. Installing MorphOS after OSX

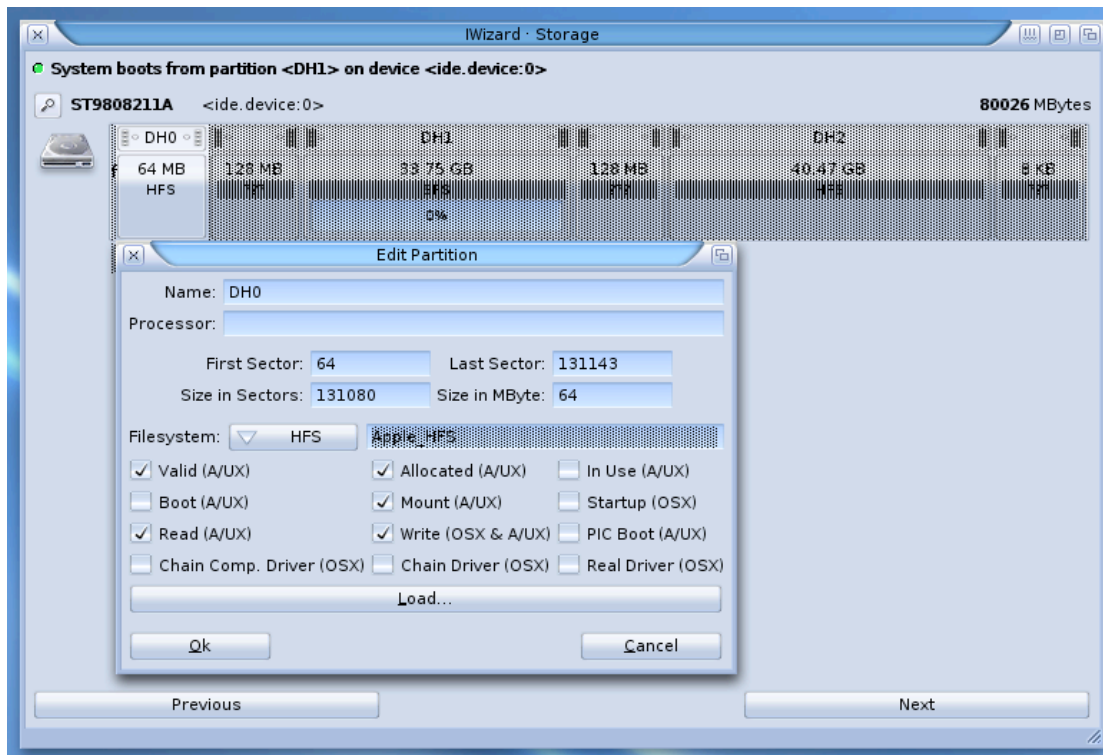
Replace the OSX Install DVD with the MorphOS CD / DVD and reboot. Press and hold the c key to make the Mini boot from a CD. Wait for it to load and run the IWizard (hit the Installation button in the welcome window, or go to MorphOSBoot:Tools and double click the IWizard icon).

Proceed with the configuration process until you get to the Storage page.

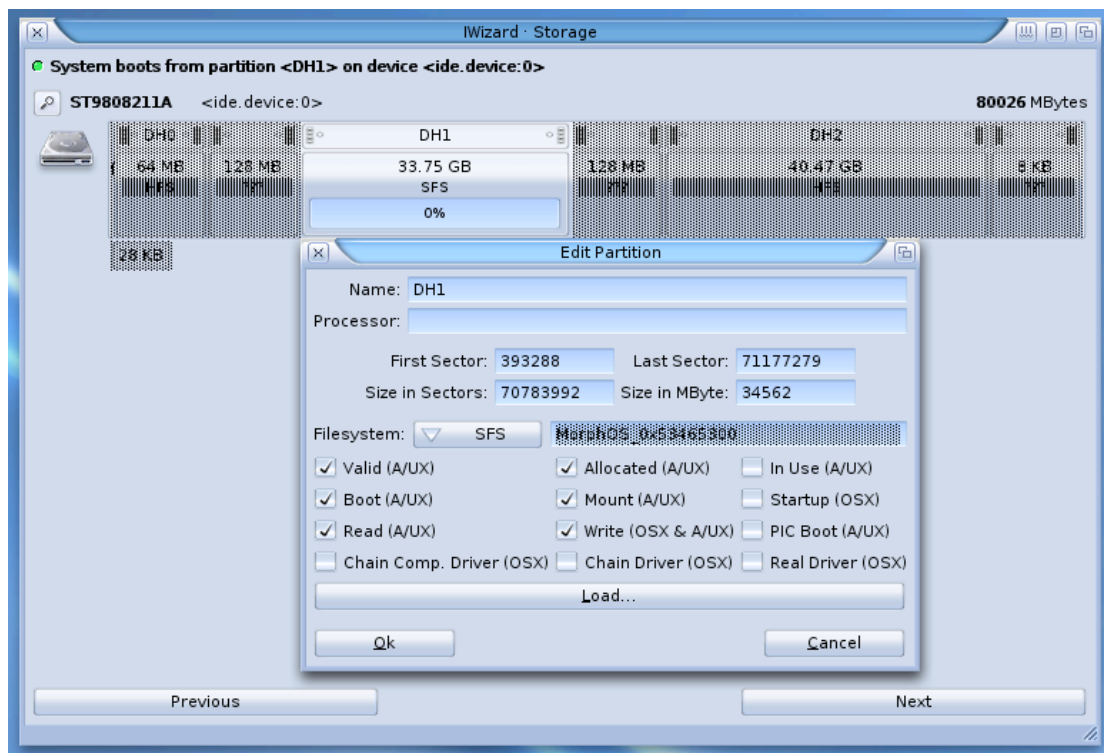


Make sure you select the manual partitioning mode; we don't want to erase our fresh OSX installation. After clicking next you will see the partitioner view. Select the first partition and make sure the Filesystem field is set to HFS, and the name is changed to DH0.

Note: do NOT remove the 128MB padding partitions. Mac OSX expects them to be there!



Now select the 1st big partition: this is the partition to install MorphOS on.



Change the Name to DH1, set the Filesystem to SFS and enable the Boot (A/UX) flag.

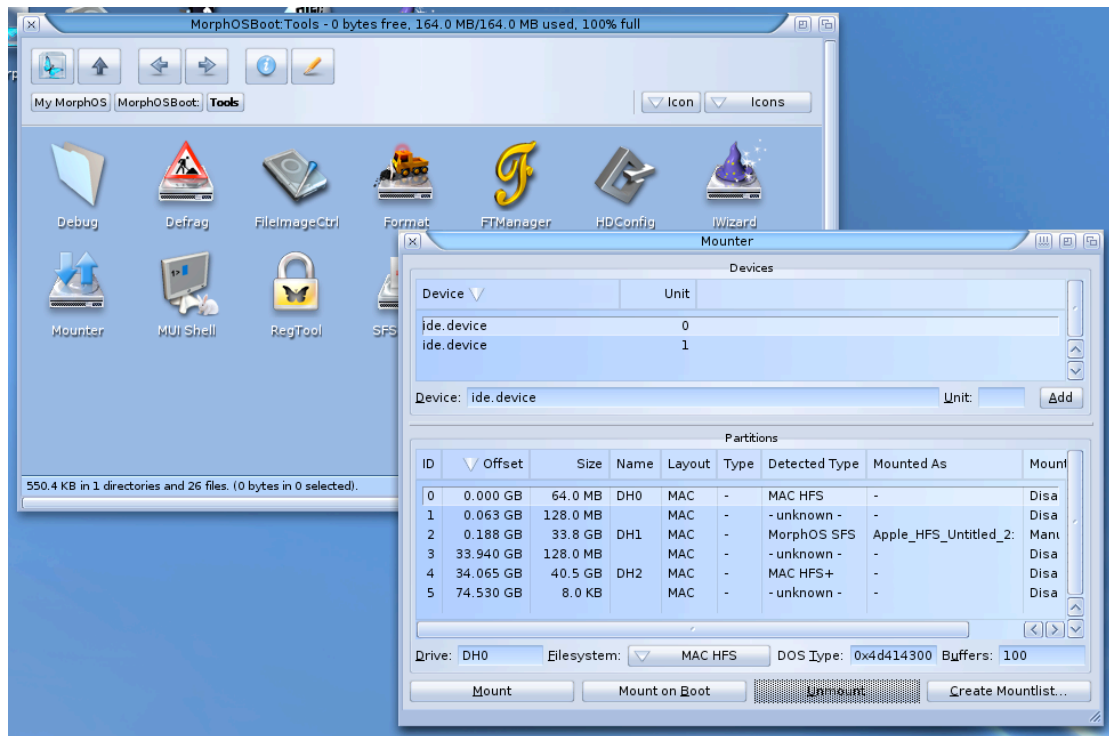
You may also want to rename the OSX partition so that it shows up as DH2 under MorphOS.

Now hit the Save button below the hard drive icon next to the partitions list. Do NOT click on the Next button!

Click on the MorphOSBoot CD icon on the desktop and go to Tools. Run the Mounter application (double-click).

Select ide.device unit 0 and the DH0 partition. Click on the Filesystem cycle gadget and select MAC HFS (!). Now click the Mount button.

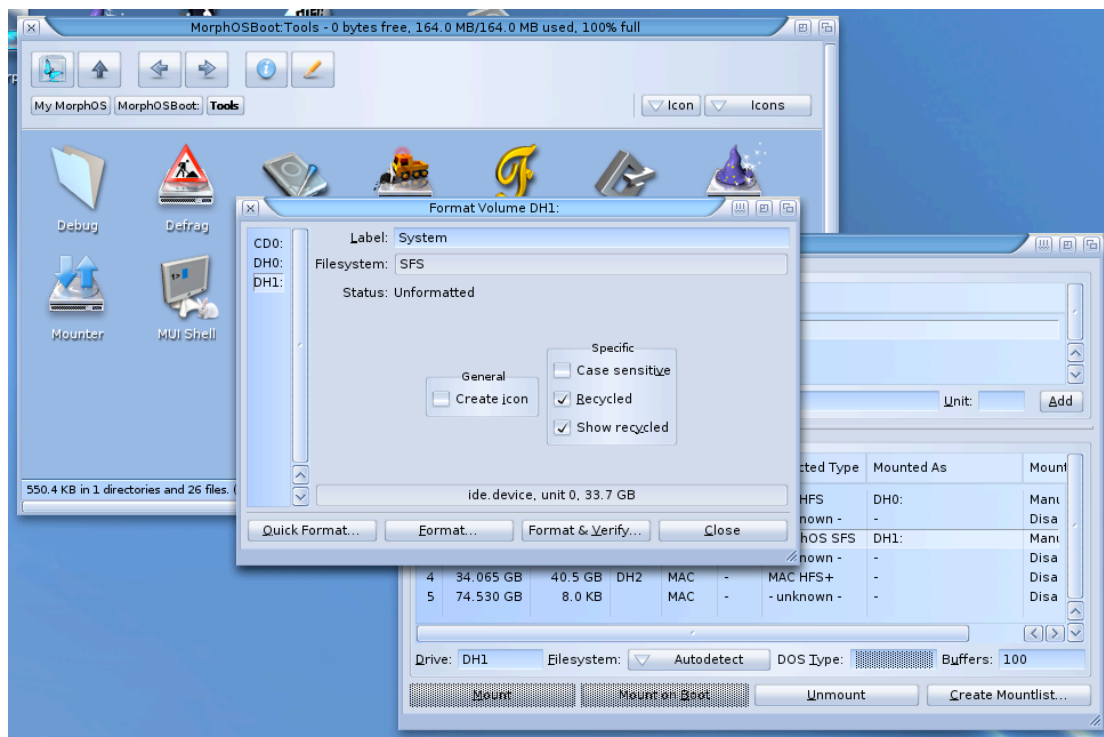
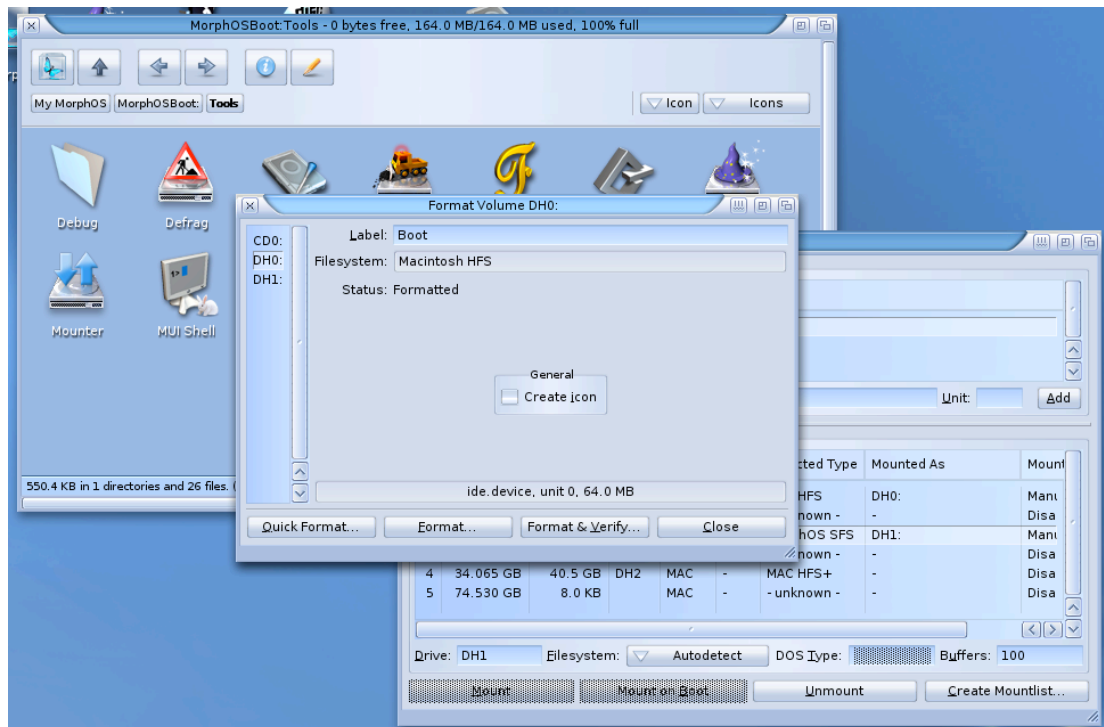
Note: MorphOS' installer expects a HFS formatted partition called Boot and will store boot files on it. It's absolutely necessary that you create the partition and name it 'Boot' and nothing else. You cannot use a HFS+ partition since MorphOS doesn't have write support for HFS+. This would make the installer fail.



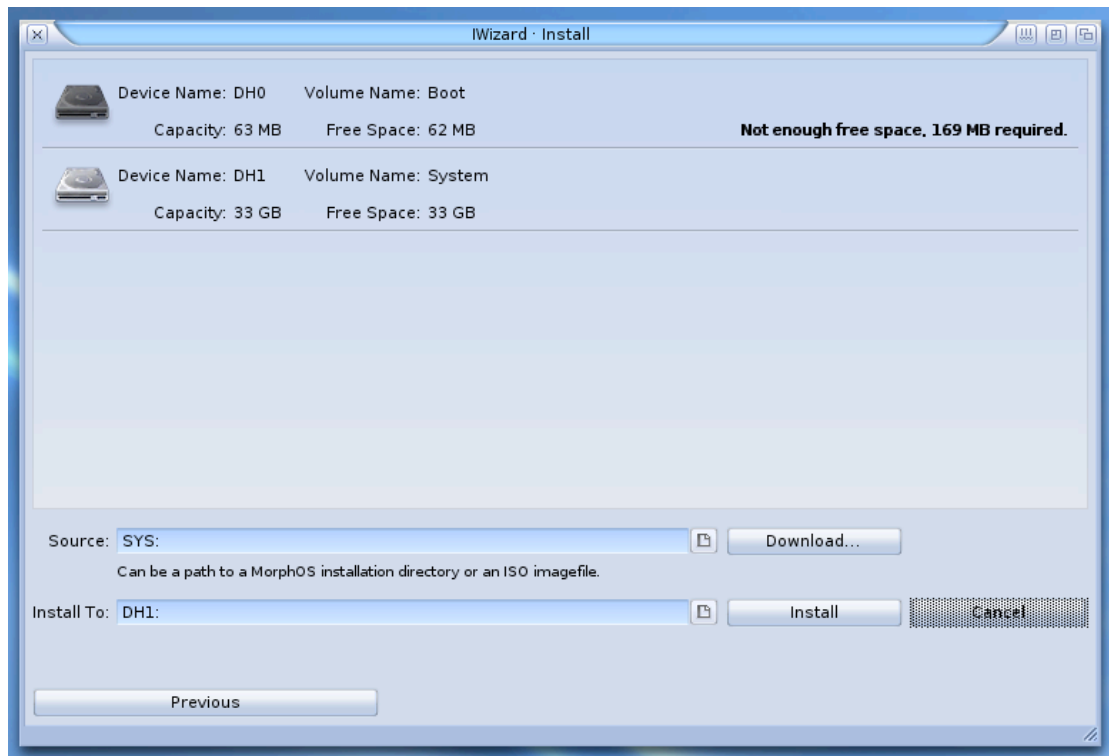
If the DH1 partition has ‘—’ in the Mounted As column, select it and hit Mount (Filesystem must be either Autodetect or MorphOS SFS).

Now click on the desktop and click with the right mouse button over the screen’s top bar (in case you’re using some silly 1-button mouse, right command (Apple) key + right alt key simulate a right mouse click under MorphOS, you may also open the menu with right command + space and navigate it with arrows). Select Format from the Utilities menu.

Select DH0 and name it Boot (yes, this REALLY is required, you have to name it Boot or MorphOS will fail to install). Press the Quick Format button. Now select DH1 and name it however you like, for example System.



Now go back to the IWizard application (in case you don't know, double-clicking on a window brings it to front in MorphOS, unlike a single click in OSX). Click on the Next button. If all went fine you will see this:



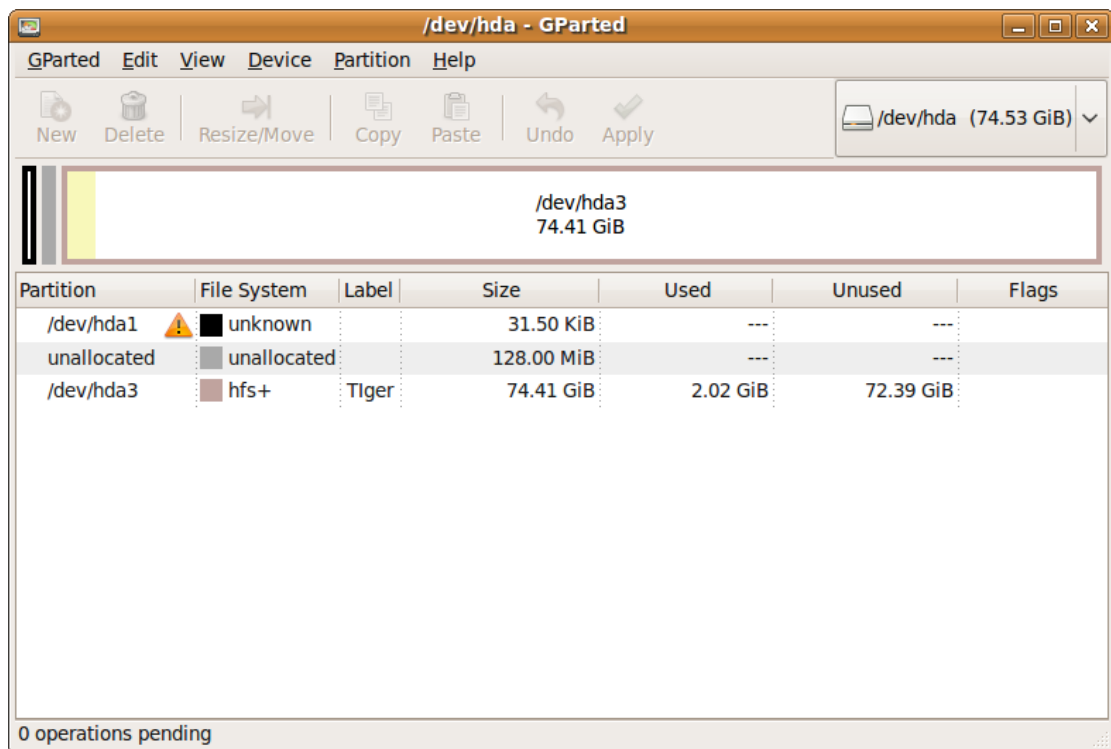
Assuming everything is correctly formatted and mounted, the installer picks the drive to install (DH1) automatically. Now just click Install and wait until it's done copying.

4. Preparing an existing OSX installation for MorphOS

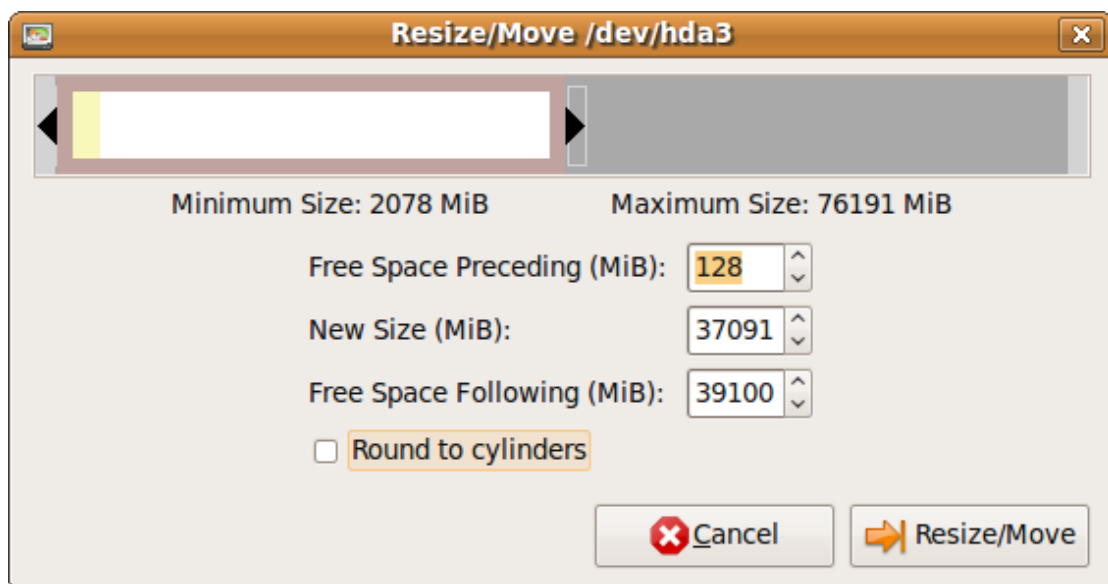
As mentioned in the Prerequisites section, in case you have an existing OSX installation, you will have to resize its partition to make some room for MorphOS. Since not everybody has retail Leopard DVD, I will use Ubuntu to explain how to do this.

Note: please read sections 2 and 3 before trying this out, some explanations available there were omitted in sections 4 and 5.

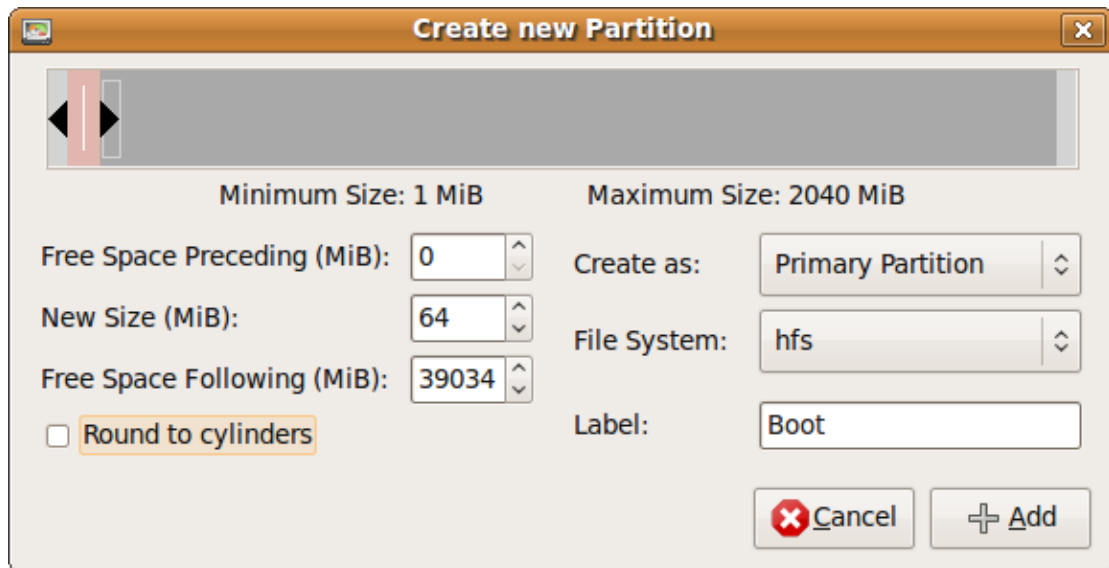
Power the Mini on and insert the Ubuntu Live CD. Press and hold the c key to force a CD boot. Now run the Partition Editor from the System -> Administration menu.



Select the OSX hfs+ partition and click on Resize/Move. Resize the partition by clicking and dragging on its right edge. Do NOT move the partition from its left edge. You MUST disable the Round to cylinders checkbox, or GParted will try to move the OSX partition. Make sure the Free Space Preceding (MiB) field stays at 128. You should leave at least 1GB of free space following the OSX partition. I'd recommend around 20GB. Now click on the Resize/Move button to apply your changes.



Click on the gray space called unallocated and click New. Set the New Size (MiB) field to 64 and the File System to hfs. Make sure the Round to cylinders checkbox is disabled. Click the Add button.



Create new Partition

Minimum Size: 1 MiB Maximum Size: 2040 MiB

Free Space Preceding (MiB): 0 Create as: Primary Partition

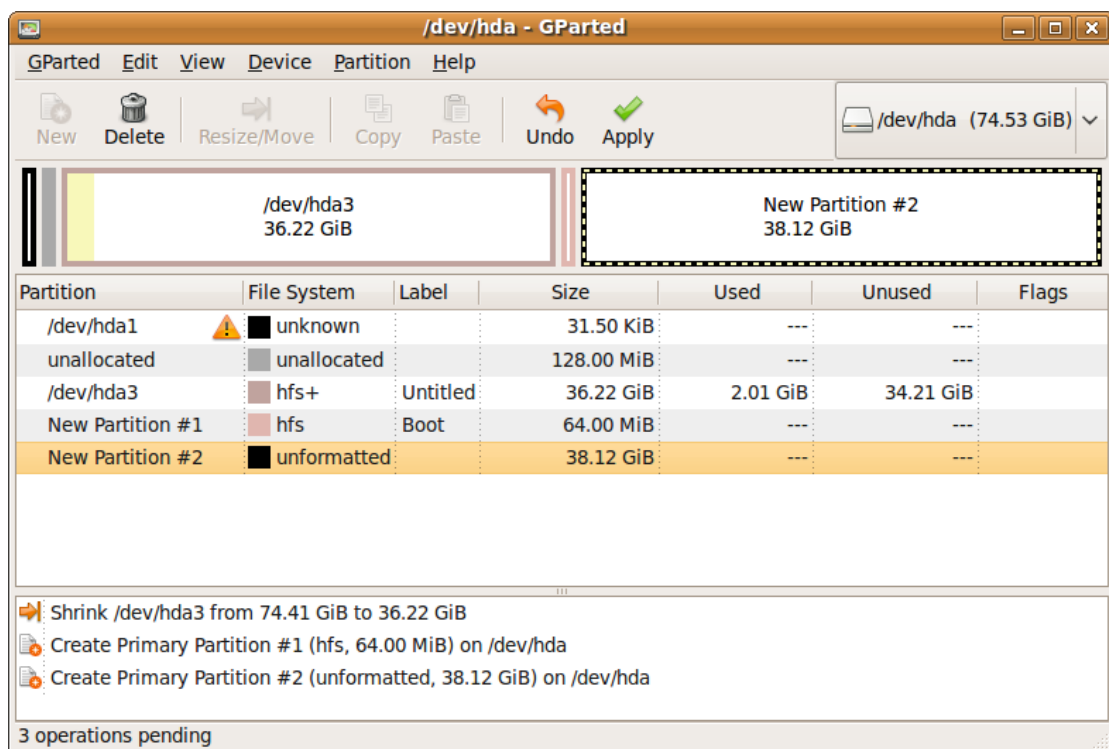
New Size (MiB): 64 File System: hfs

Free Space Following (MiB): 39034 Label: Boot

☐ Round to cylinders

Cancel Add

Select the unallocated space again, change the File System to unformatted (we will change it from MorphOS later), disable the Round to cylinders checkbox and press Add.



/dev/hda - GParted

Buttons: New, Delete, Resize/Move, Copy, Paste, Undo, Apply

Device: /dev/hda (74.53 GiB)

Partition	File System	Label	Size	Used	Unused	Flags
/dev/hda1	unknown		31.50 KiB	---	---	
unallocated	unallocated		128.00 MiB	---	---	
/dev/hda3	hfs+	Untitled	36.22 GiB	2.01 GiB	34.21 GiB	
New Partition #1	hfs	Boot	64.00 MiB	---	---	
New Partition #2	unformatted		38.12 GiB	---	---	

Operations:

- Shrink /dev/hda3 from 74.41 GiB to 36.22 GiB
- Create Primary Partition #1 (hfs, 64.00 MiB) on /dev/hda
- Create Primary Partition #2 (unformatted, 38.12 GiB) on /dev/hda

3 operations pending

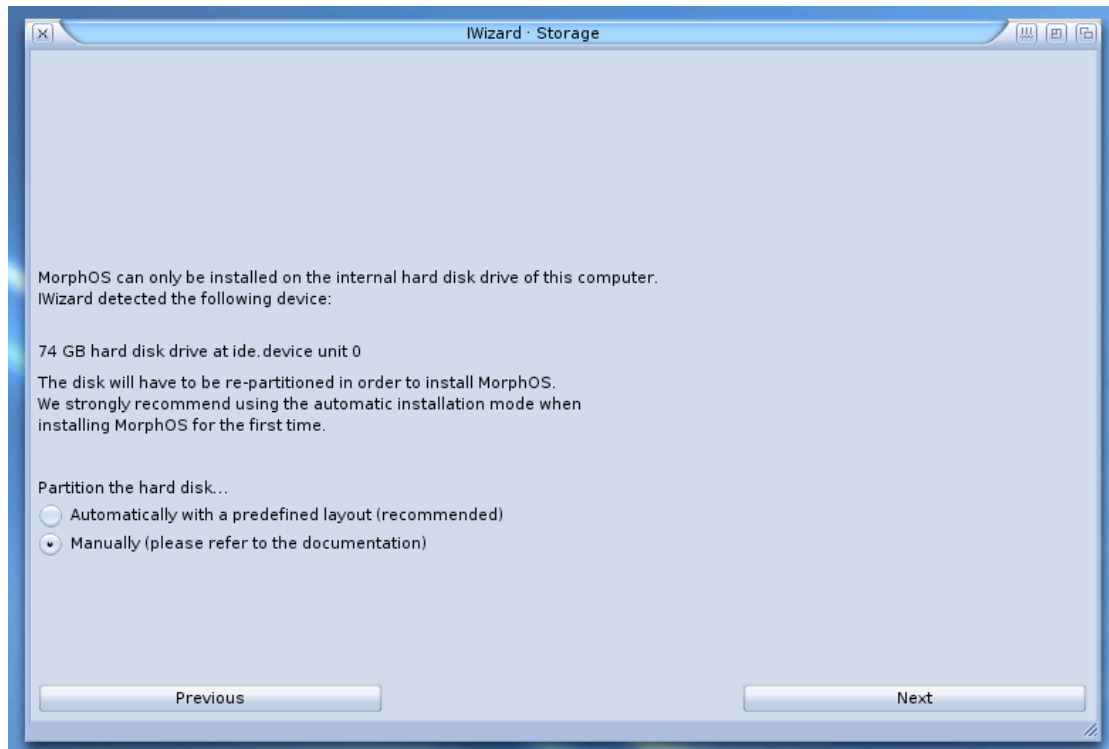
Click the Apply button to apply our partition table changes. It will take some time to resize the partition, depending on the used space. Make sure you've backed up your data because a sudden power outage will most likely make your data hard / impossible to recover.

Once the process completes, reboot into OSX to see if all went OK.

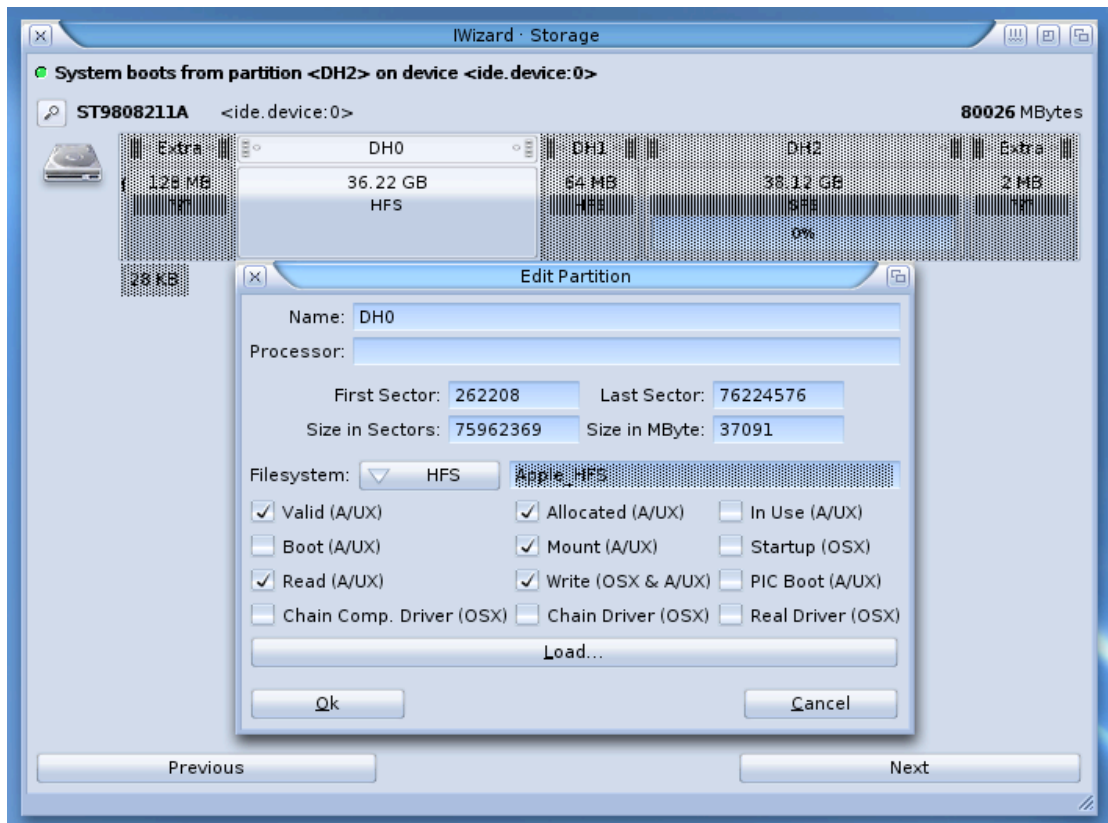
5. Installing MorphOS next to an existing OSX installation

Make sure you followed all steps in section 4. Replace the Ubuntu CD with the MorphOS CD and reboot. Press and hold the c key to make the Mini boot from a CD. Wait for it to load and run the IWizard (hit the Installation button in the welcome window, or go to MorphOSBoot:Tools and double click the IWizard icon).

Proceed with the configuration process until you get to the Storage page.

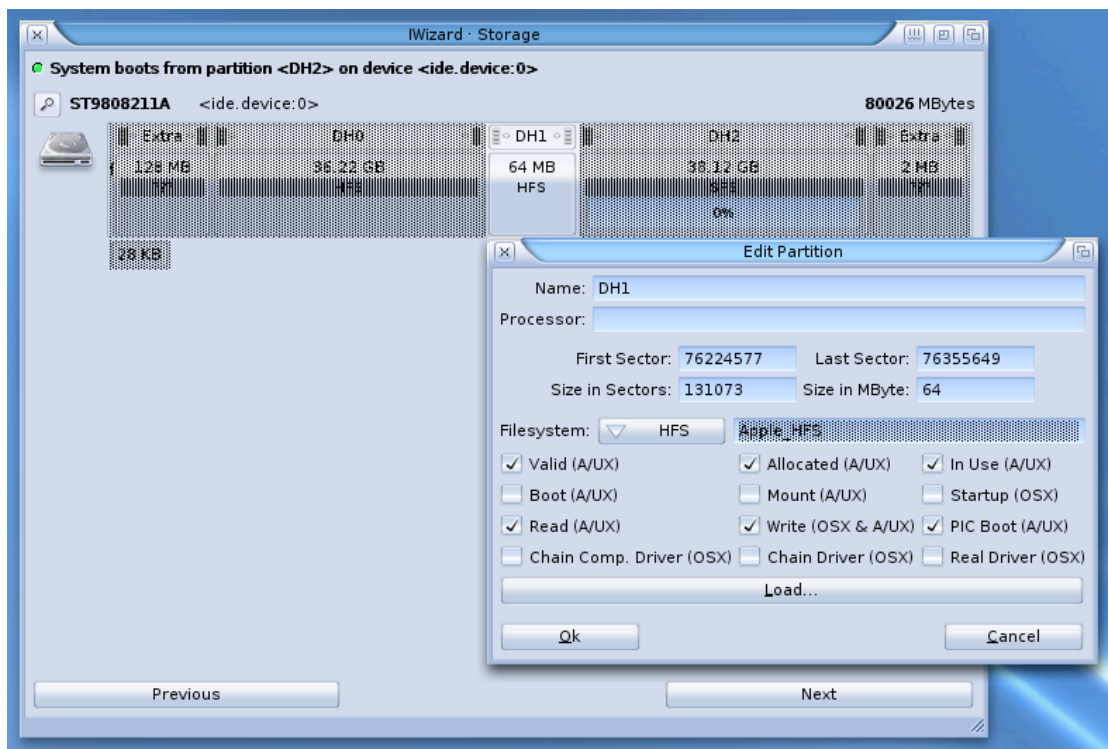


Make sure you select the manual partitioning mode; we don't want to erase our existing OSX installation. After clicking next you will see the partitioner view. Select the OSX HFS partition and make sure the Boot (A/UX) flag is unset. Name this partition DH0.

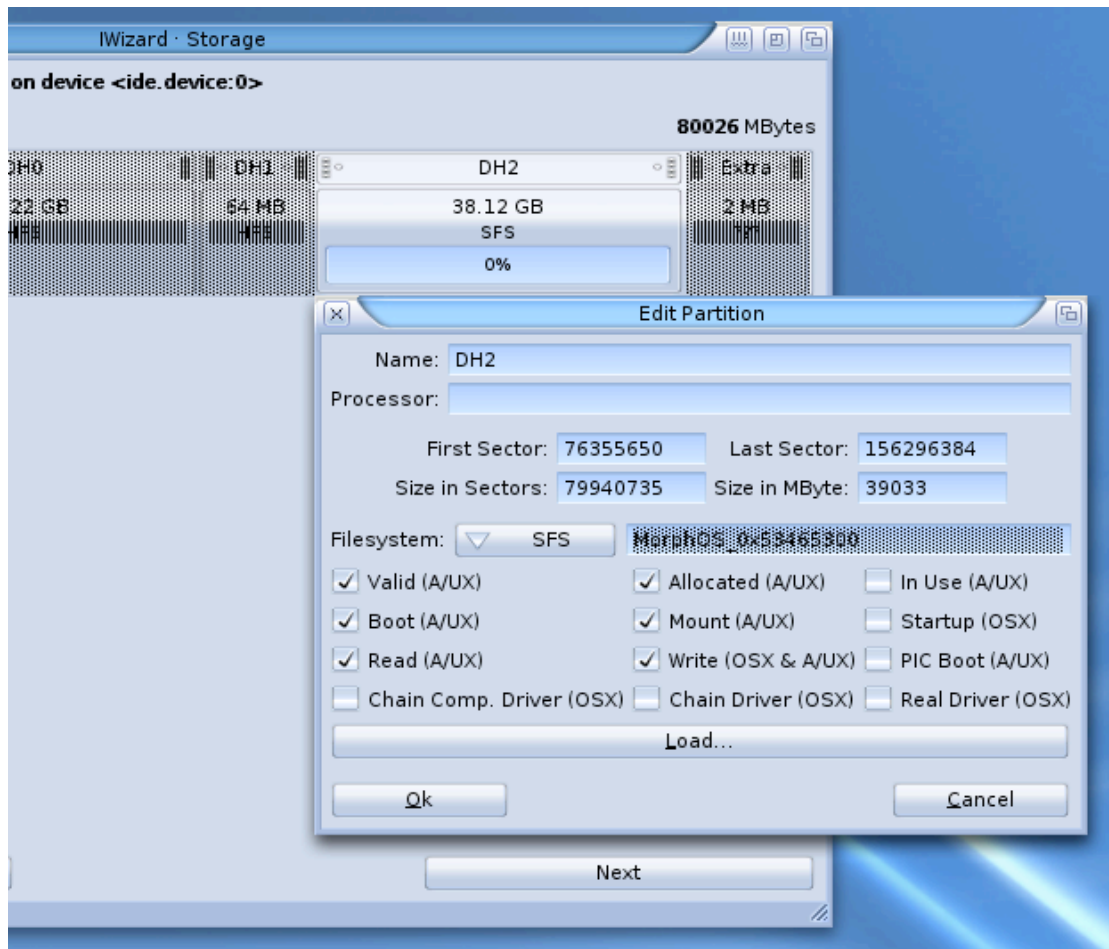


Note: the partition's Filesystem is always HFS, even if it's formatted with HFS+, this is the reason why we have to specify the FS type manually when mounting it later

Edit the 64MB HFS partition now. Name it DH1 and make sure the Boot (A/UX) flag is turned off. The Mount (A/UX) flag can be ignored.



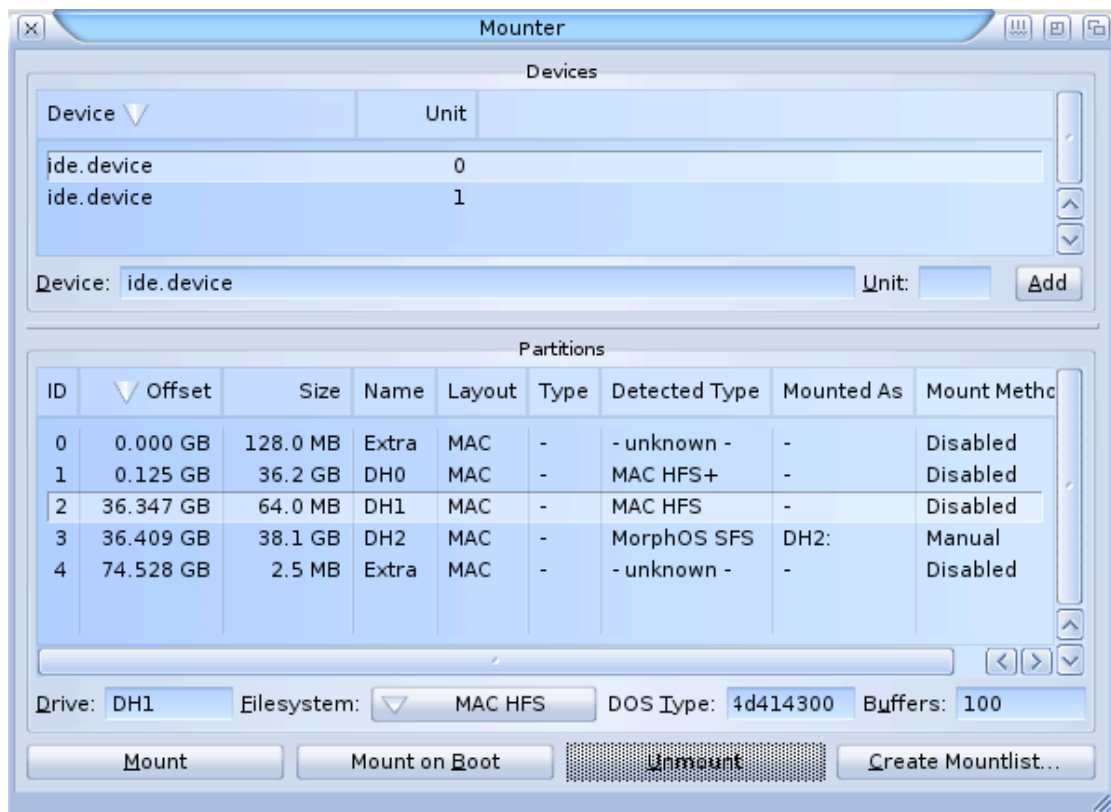
Last will be the partition for the MorphOS installation. Name it DH2 and make sure the Boot (A/UX) and Mount (A/UX) flags are turned ON. Change the Filesystem to SFS.



Save the changes by clicking on the Save button below the hard drive icon. Do not press Next yet!

Click on the MorphOSBoot CD icon on the desktop and go to Tools. Run the Mounter application (double-click).

Select ide.device unit 0 and the DH1 partition. Click on the Filesystem cycle gadget and select MAC HFS (!). Now click the Mount button.

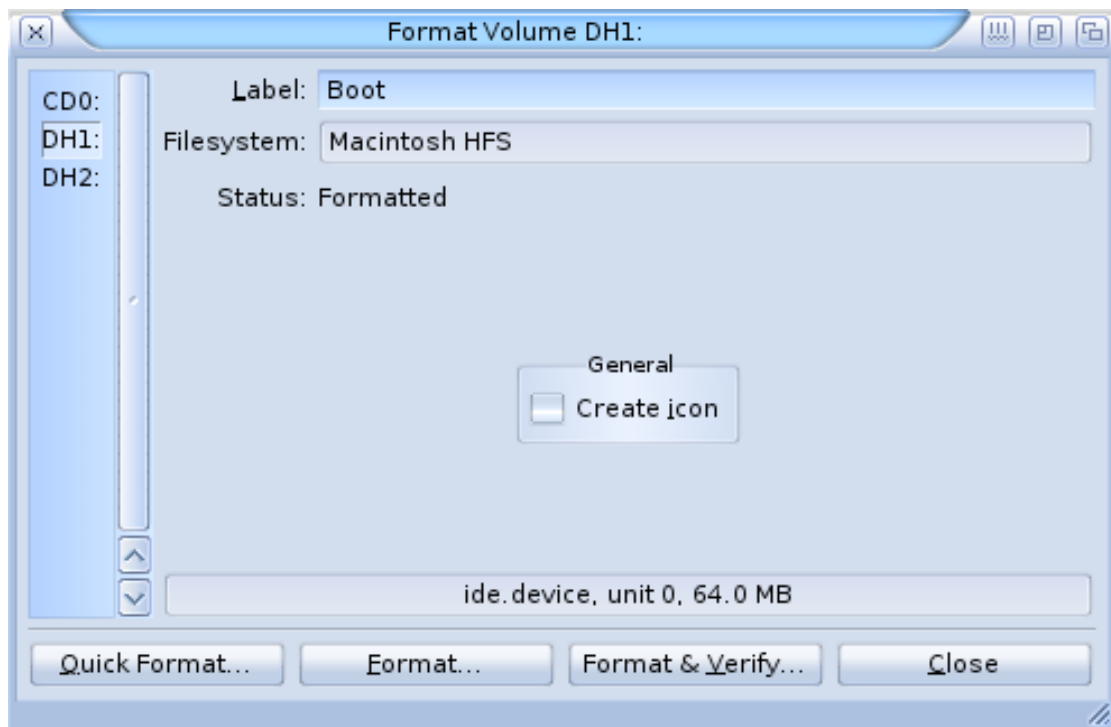


If the DH2 partition has '-' in the Mounted As column, select it and hit Mount (Filesystem must be either Autodetect or MorphOS SFS).

Now click on the desktop and click with the right mouse button over the screen's top bar (in case you're using some silly 1-button mouse, right command (Apple) key + right alt key simulate a right mouse click under MorphOS, you may also open the menu with right command + space and navigate it with arrows). Select Format from the Utilities menu.

Select DH1 and name it Boot (yes, this REALLY is required, you have to name it Boot or MorphOS will fail to install). Press the Quick Format button. Now select DH2 and name it however you like, for example System.

Note: if the HFS partition is already formatted, Quick Format it anyway



Now go back to the IWizard. Click on the Next button. Assuming everything is correctly formatted and mounted, the installer picks the drive to install (DH2) automatically. Now just click Install and wait until it's done copying.

6. Trying it out, changing the default system

After a successful installation you may start MorphOS from the HD. Eject the CD by right clicking on its icon and selecting Eject. Reboot MorphOS either by selecting Shut Down... from the Ambient menu, or by pressing control + left command + right command keys.

Note: if you don't eject the CD, MorphOS will try to boot from it again! It will load the boot.img from the hard drive, but all other files from the CD even if the c key wasn't pressed

By default, the Mac Mini will boot OSX. To boot MorphOS, press and hold the alt key – this will bring up the OpenFirmware's graphical boot menu. Select the partition with a butterfly icon and you will boot into MorphOS.

In order to boot MorphOS by default, one must change the OpenFirmware settings. To get to the firmware prompt: reboot and press and hold the command + option + o + f keys until you see the OF screen.

To determine the partition number of the HFS boot partition type the following:

```
dir hd:x,\|
```

where x should be a number from 3 to n, depending on partition layout. If you see boot.img and bootinfo.txt files being listed, this is the correct one. Now type:

```
setenv boot-command boot hd:x,\bootinfo.txt
```

replacing x with the partition number you just found.

It's possible to slightly increase the booting speed by making OF skip the network booting initialization. This is done with:

```
setenv skip-netboot? true
```

Now save the changes and reboot by typing:

```
reset-all
```

... and the Mini will now boot MorphOS by default. To boot OSX just hold the alt key and select it from the menu.

Have fun and don't forget to register MorphOS :)

Rev 0.3, 15.09.2009, © 2009 Jacek Piszczek, jacadcaps@poczta.onet.pl